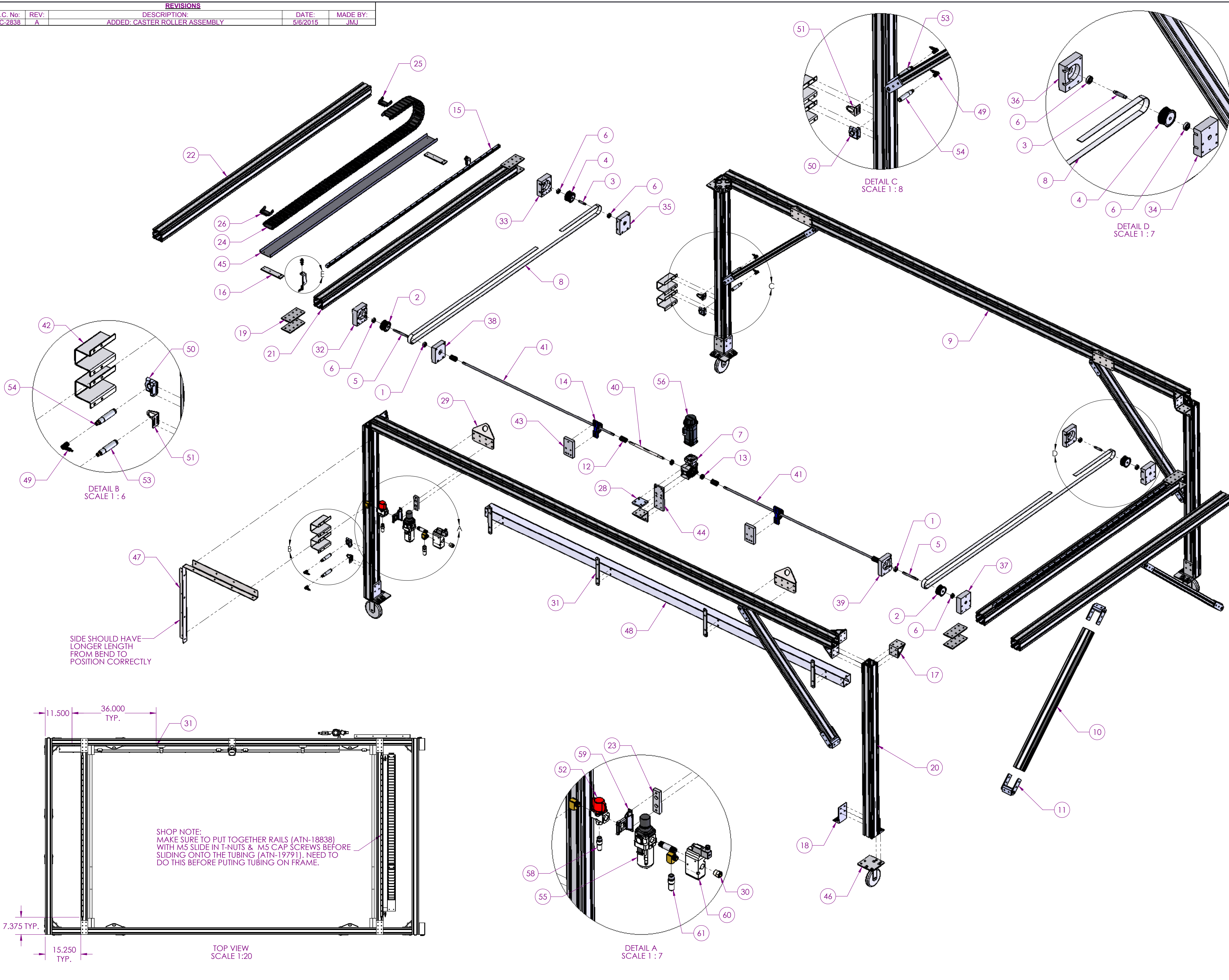


REVISIONS			
E.C. No:	REV:	DESCRIPTION:	MADE BY:
EC-2838	A	ADDED: CASTER ROLLER ASSEMBLY	JMJ



ITEM NO.	PART NUMBER	DESCRIPTION	QTY.
1	ATN-11567	BEARING	2
2	ATN-18399	36AT5/40-2 Timing Pulley	2
3	ATN-18401	Y Axis Idler Shaft	2
4	ATN-18402	36AT5/40-2 Timing Pulley	2
5	ATN-18437	Y Axis Shaft 1	2
6	ATN-18537	BEARING	6
7	ATN-18540	GEARBOX REDUCER	1
8	ATN-18543	TIMING BELT, Y AXIS	2
9	ATN-18560	SIDE, DUNNAGE FEEDER, 3 X 3 X 154	2
10	ATN-18562	ANGLE SUPPORT, 1.5 X 3 X 40	5
11	ATN-18564	UNIVERSAL JOINT, 80/20	10
12	ATN-18658	CLAMPING COUPLING W/ KEYWAY	4
13	ATN-18659	CLAMPING COLLAR	2
14	ATN-18663	BEARING, PILLOW BLOCK	2
15	ATN-18838	RAIL, Y AXIS	2
16	ATN-18896	SUPPORT, CABLE TRACK	2
17	ATN-19127	CORNER BRACKET	12
18	ATN-19128	FLOOR MOUNT	8
19	ATN-19131	PLATE, ATTACHMENT, 80/20	8
20	ATN-19338	LEG, DUNNAGE FEEDER, 3 X 3 X 54	4
21	ATN-19791	INSIDE SUPPORT, SHORTENED FRAME, 3 X 3 X 78	2
22	ATN-19792	END, SHORTENED FRAME, 3 X 3 X 84	2
23	ATN-20058	AIR REGULATOR MTG BRACKET	1
24	ATN-20225	IGUS, CABLE CARRIER, Y AXIS, STD.	1
25	ATN-20444	MTG. BRACKET, IGUS, FIXED, 63MM, FEMALE	1
26	ATN-20445	MTG. BRACKET, IGUS, FIXED, 63MM, MALE	1
27	ATN-20840	SENSOR BRACKET, DF	2
28	ATN-21289	GEAR BOX, MOUNT, SUPPORT	1
29	ATN-21980	LIFT LUG, DUNNAGE FEEDER	4
30	ATN-22209	FITTING, AIR, 1/2" NPT X 1/2" TUBE	1
31	ATN-23623	BRACKET, WIREWAY HANGER	4
32	BTN-18393	Y AXIS L DRIVER BEARING MTG BLOCK	1
33	BTN-18394	Y AXIS L IDLER BEARING MTG BLOCK	1
34	BTN-18395	Y AXIS R, Idler Bearing Mtg Block	1
35	BTN-18396	IDLER L BEARING COVER	1
36	BTN-18397	IDLER R BEARING COVER	1
37	BTN-18398	Y AXIS R DRIVER BEARING MTG BLOCK	1
38	BTN-18411	DRIVER L BEARING COVER	1
39	BTN-18412	DRIVER R BEARING COVER	1
40	BTN-18438	Drive Shaft	1
41	BTN-18441	Y Axis Shaft	2
42	BTN-19386	GUARD, PHOTOEYE	4
43	BTN-19789	BRG. PLATE, SHORTENED FRAME	2
44	BTN-19790	Y AXIS GEARBOX MTG, SHORTENED FRAME	1
45	BTN-22633	CABLE TROUGH, Y AXIS	1
46	BTN-23938	CASTER ASSEMBLY, DUNNAGE FEEDER	4
47	CTN-22647	BRACKET, DF, CABINET MOUNTING	1
48	CTN-23624	WIREWAY MODIFICATION, 2.5 X 2.5 X 120, STRAIGHT	1
49	EEN-00648	CABLE, M12, 90, 10M	6
50	EEN-01073	PHOTOEYE MOUNT SWIVEL	2
51	EEN-01447	MOUNT, PHOTOEYE	2
52	EEN-01488	VALVE, LOCKOUT, 1/2"	1
53	EEN-01558	SAFETY BEAM SENDER	2
54	EEN-01559	SAFETY BEAM RECEIVER	2
55	EEN-01902	REGULATOR W/ FILTER, 1/2"	1
56	EEN-02285	MOTOR, SERVO, 034	1
57	EEN-02308	PROX, ADJUSTABLE DISTANCE	2
58	EEN-02338	SILENCER, 3/8 NPT	1
59	EEN-02339	MTG. CONNECTOR, AIR PREP 400	1
60	EEN-02378	VALVE, 1/2" NPT, NC, 3 WAY	1
61	EEN-02420	SILENCER, 1/2"	1

MODEL FILE NAME: **BOM-ASDF018**

**TOLERANCES: (LXXX)**  
(UNLESS OTHERWISE SPECIFIED)

MACHINE LOCATIONS: ±.005  
CUT LOCATIONS: ±.015  
BURN-OUT LOCATIONS: ±.100  
ANGULAR TOL: ±.50°  
SHEET METAL TOL: ±.030

MATERIAL: N/A

MATERIAL NUMBER: N/A

STOCK SIZE: N/A

FINISH: N/A

**Automatán**

PROPERTY OF AUTOMATAN, PLOVER, WISCONSIN.  
THIS PRINT IS NOT TO BE COPIED OR REPRODUCED  
WITHOUT WRITTEN PERMISSION BY AUTOMATAN

DUNNAGE FEEDER, S.F.W. & Y-AXIS, W/ ELECT CAB

**BOM-ASDF018** REVISION: **A**

SCALE: 1:12	NAME: <b>JMH</b>	DATE: <b>1/6/2015</b>
ENGINEERED BY: <b>JMH</b>	<b>JMH</b>	<b>1/6/2015</b>
DRAWN BY: <b>JMH</b>	<b>JMH</b>	<b>1/6/2015</b>
CHECKED BY: <b>***</b>	<b>***</b>	<b>***</b>